

**MAGIC DESIGN SRL**

Mun Chisinau  
str. Alba lulia, 3ap. 70  
REPUBLIC OF MOLDOVA

**Sample information\*:**

Nature ESSENTIAL OIL  
Name LAVENDER  
Botanical name LAVANDULA ANGUSTIFOLIA  
Origin -  
Plant part -  
Reference CHISINIOVSCAIA 90

**Original packaging:** Amber flask of 10 ml

**Pyrenessences reference:** KO23

**Requested analysis:** SIMPLE GC ANALYSIS

**Date of receipt:** 11/09/2023

**Date of analysis:** 12/09/2023

**Sample storage:** 1 year - room temperature

*\* provided by the client*

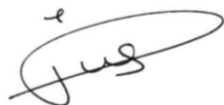
**- Comments -**

**This chromatographic profile complies with the ISO 3515 : 2004 standard relating to the Lavender essential oil from "other origin than France, Bulgaria, Russia or Australia".**

**Report validated by:**

Line Pauset

- Laboratory manager -



**Report written by:**

Fanny Sallilas

- Analyst technician -



## ANALYSIS CONDITIONS

**Methodology:** according to ISO 11024

**Sample preparation:** 10% dilution in hexane

**Equipment:** - GC/MS Agilent 7890/5975

- GC/FID Agilent 6890

**Column:** VF-Wax (polar)

**Acquisition method:** LAV\_N

**Peaks identification:** - internal MS library "ESSENCE.L"

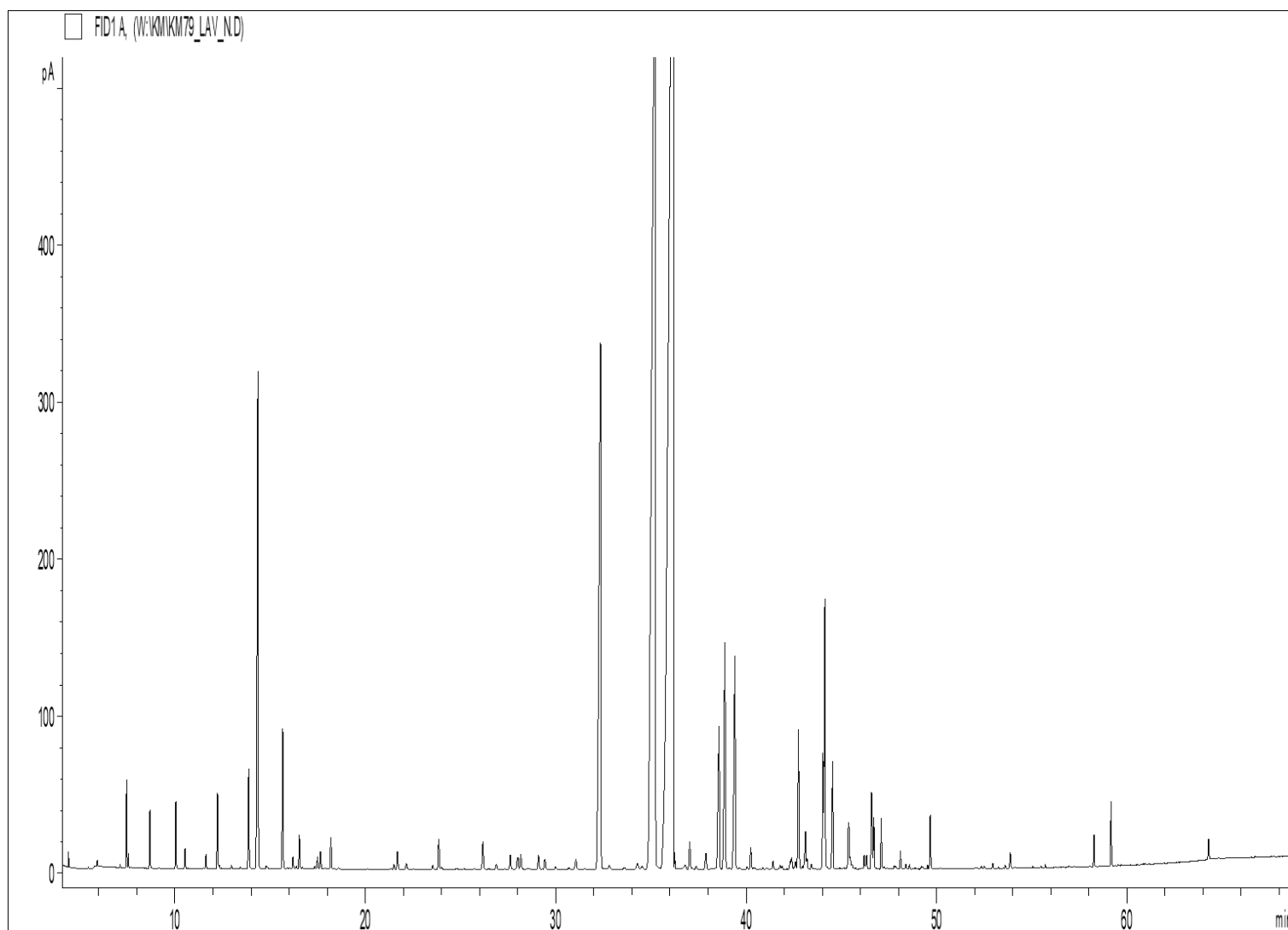
- commercial MS library "NIST.L"

- retention time (internal database)

**Integration threshold:** 0.01%

**Investigation criteria:** compounds of the ISO standard (if applicable) or characteristic compounds, and other major compounds (> 1%), within the limit of 20 compounds maximum.

## CHROMATOGRAPHIC PROFILE



## RESULTS TABLE

- LAVANDULA ANGUSTIFOLIA EO - REF. CHISINIOVSCAIA 90 -

Peaks	RT (min)	Compound name	%	Standard (%)
1	12.06	beta-MYRCENE	1.03	
2	13.66	LIMONENE	0.33	≤ 1.0
3	14.12	1,8-CINEOLE	1.50	≤ 3.0
4		beta-PHELLANDRENE		≤ 1.0
5	15.50	<b>cis-beta-OCIMENE</b>	<b>5.74</b>	<b>1.0 - 10.0</b>
6	16.34	trans-beta-OCIMENE	2.33	0.50 - 6.0
7	16.49	3-OCTANONE	0.23	≤ 3.0
8	31.86	CAMPHOR	0.12	≤ 1.5
9	34.87	<b>LINALOOL</b>	<b>35.94</b>	<b>20.0 - 43.0</b>
10	35.71	<b>LINALYL ACETATE</b>	<b>35.32</b>	<b>25.0 - 47.0</b>
11	38.17	<b>beta-CARYOPHYLLENE</b>	<b>2.69</b>	
12	38.49	TERPINENE-4-OL	1.08	≤ 8.0
13	39.04	LAVANDULYL ACETATE	2.19	≤ 8.0
14	42.47	E-beta-FARNESENE	2.12	
15	42.83	LAVANDULOL	0.67	≤ 3.0
16	43.77	alpha-TERPINEOL	1.25	≤ 2.0
		<b>TOTAL</b>	<b>92.53</b>	

### Abbreviations:

GC	Gas chromatography
MS	Mass spectrometry
FID	Flame ionization detector
EO	Essential oil
RT	Retention time
Nd	Not detected
Tr.	Traces

- The results refer only to the object submitted for analysis, only to the sample as it was received.

- Reproduction of this report is only authorized in its integral form unless authorized by the laboratory.