

Customer :

BINASTROCOM

**Chisinau city
Kiev 8/2 street of 42
REPUBLIC OF MOLDOVA**

Sample Nature : ESSENTIAL OIL

Botanical name : LAVANDULA ANGUSTIFOLIA

Sample name : LAVANDULA ANGUSTIFOLIA

Batch number : CHISINAU-90 K-90

Origin : REPUBLIC OF MOLDOVA

Plant part : FLOWERING TOP

Our reference : IN30

Receipt : 29/09/2022

Analysis date : 12/10/2022

Packaging : Amber flask of 10 ml

Requested analysis : GCsimple

Sample storage : 1 year - room temperature

The above information is provided by the customer and sampling is under his responsibility

Comments :

This chromatographic profile complies with the ISO 3515 : 2004 standard relating to the clonal Lavender essential oil, "other origin than France, Bulgaria, Russia or Australia".

Report validated by :

Line Pauset - *Laboratory manager*



Report written by :

Fanny Delater - *Analyst technician*

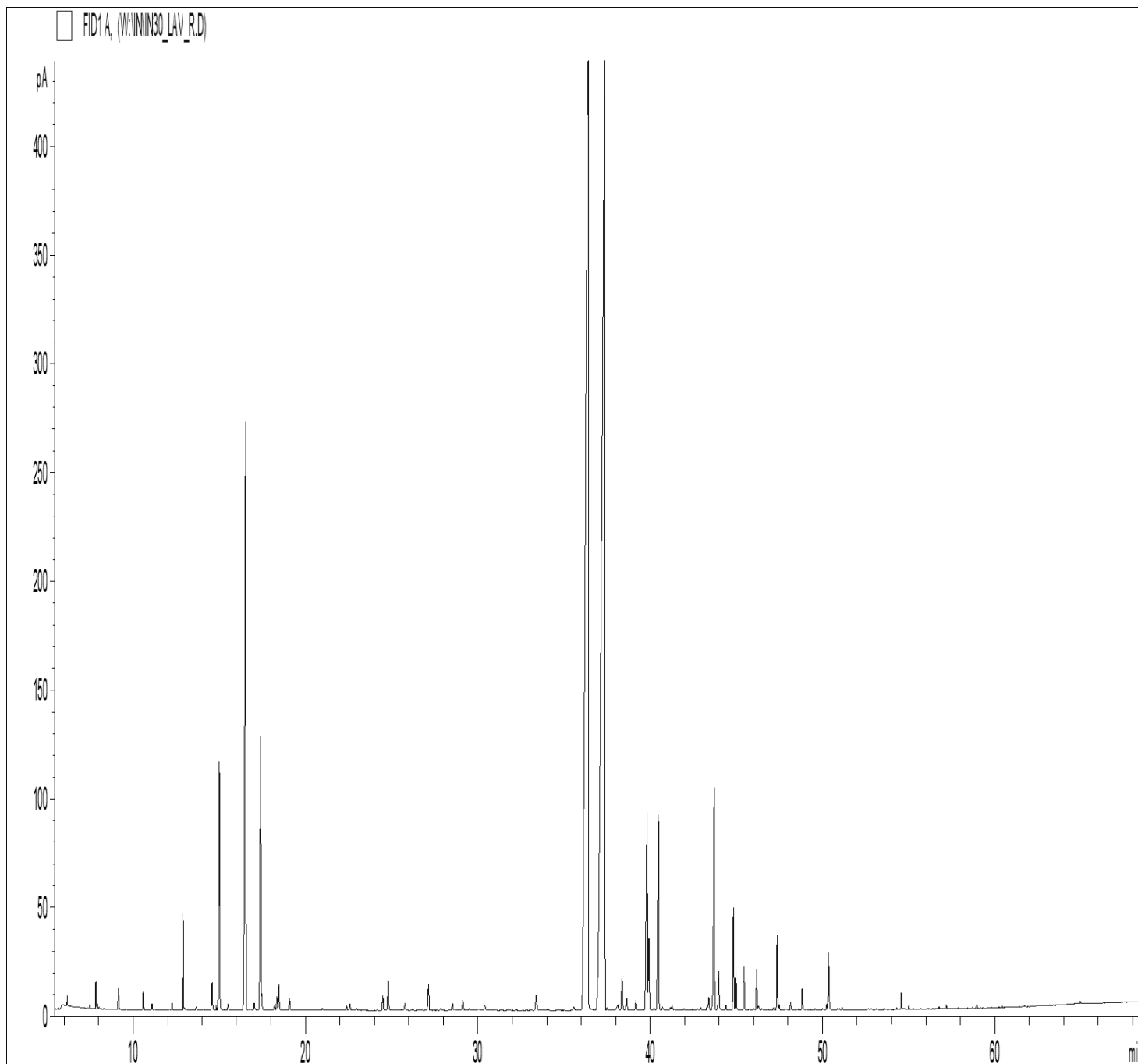


GAS CHROMATOGRAPHY (according to the norm NF ISO 11024)

Analysis conditions :

- . GC/MS Agilent 7890 / 5977 (Red) - Column : VF WAX (polar) 60 m * 0.25 mm * 0.25 µm
- . GC/FID Agilent 6890 – Column : VF WAX (polar) 60 m * 0.25 mm * 0.25 µm
- . Temperature program : (Lav) 50°C - 2°C/min until 105°C - 1°C/min until 115°C - 10°C/min until 250°C - 15 min to 250°C
- . Sample injection / split : 1 µl of 10 % solution in hexane
- . Mass range : 30 to 350 - Oil compounds are identified by a combination of retention times and mass spectra library (our own database and NIST commercial database).
- . Percentages are calculated from GC/FID peaks areas without using corrections factors.
- . The reported compounds are those of the ISO standard (if applicable) or the characteristic compounds, and the other major compounds (> 1%), within the limit of 20 compounds maximum.

Chromatographic profile :



Identification results : LAVANDULA ANGUSTIFOLIA REPUBLIC OF MOLDOVA - BATCH N° CHISINAU-90 K-90				
Peaks	RT (min)	Compound name	%	Norm (%)
1	14.57	LIMONENE	0.27	< 1
2	15.00	1,8-CINEOLE	2.57	< 3
3	15.05	beta-PHELLANDRENE	0.05	< 1
4	16.52	cis-beta-OCIMENE	7.89	1 - 10
5	13.39	trans-beta-OCIMENE	2.91	0.5 - 6
6	17.46	3-OCTANONE	0.16	< 3
7	33.39	CAMPHOR	0.23	< 1.5
8	36.40	LINALOOL	31.65	20 - 43
9	37.37	LINALYL ACETATE	34.68	25 - 47
10	39.81	beta-CARYOPHYLLENE	2.95	
11	39.93	TERPINENE-4-OL	0.86	< 8
12	40.48	LAVANDULYL ACETATE	2.47	< 8
13	43.71	E-beta-FARNESENE	2.67	
14	43.97	LAVANDULOL	0.44	< 3
15	44.83	alpha-TERPINEOL	0.97	< 2
		TOTAL	90.77	